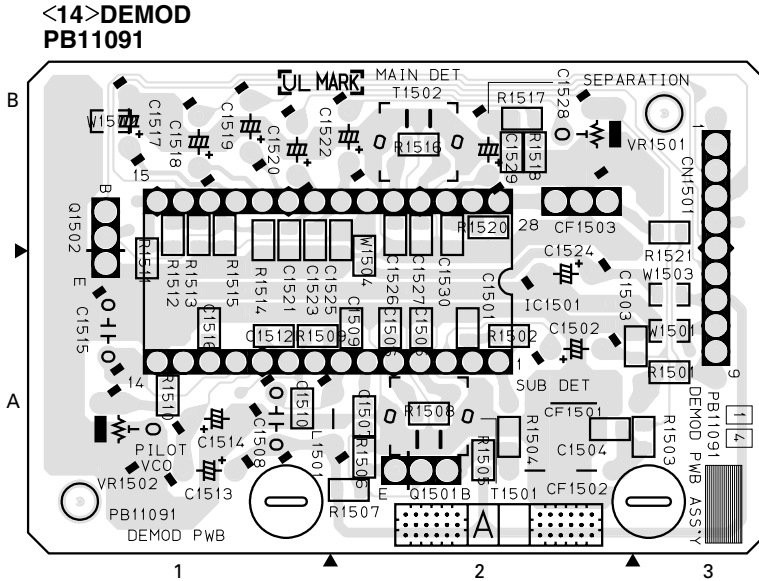


SECTION 4 CHARTS AND DIAGRAMS

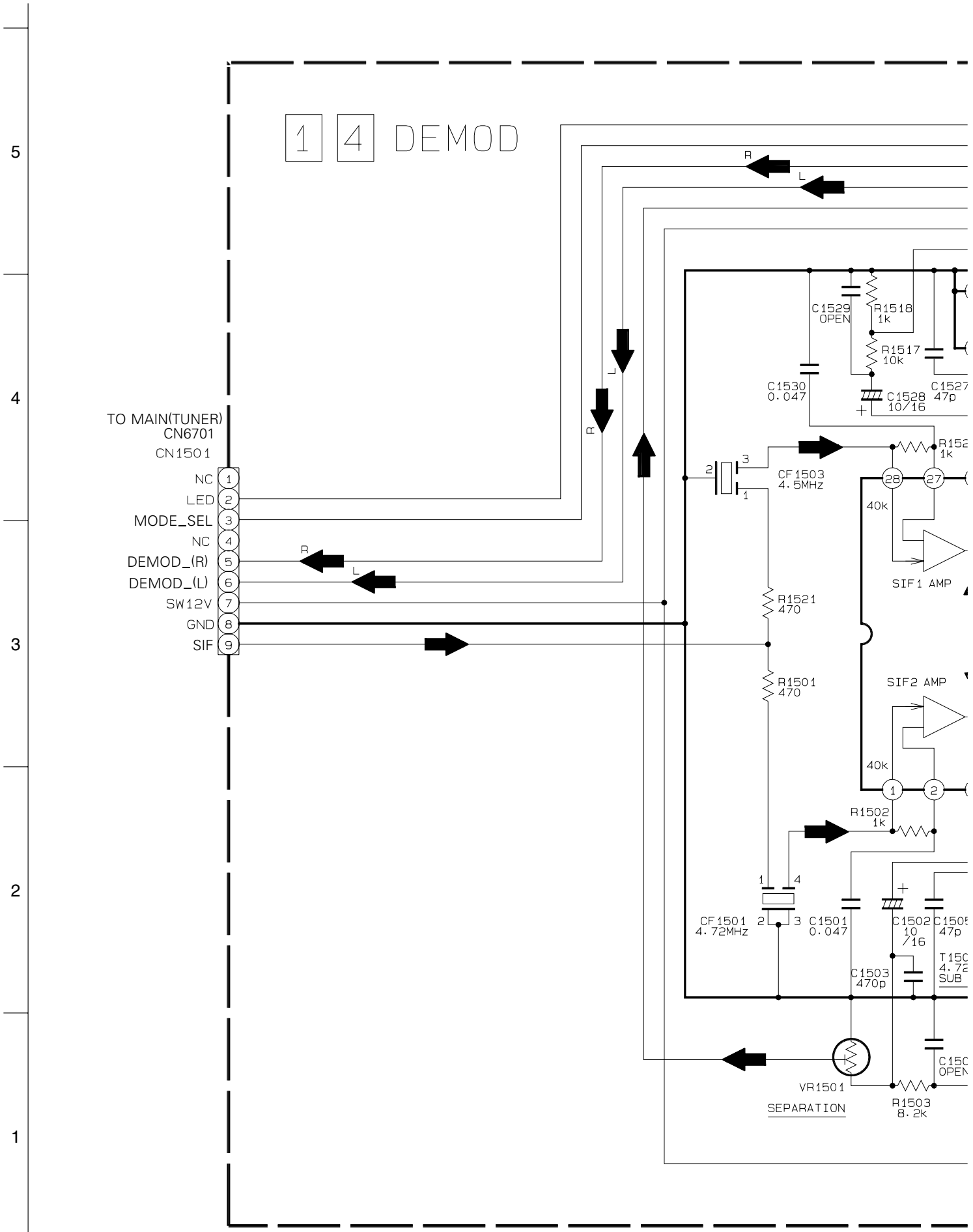
4.1 DEMODULATOR CIRCUIT BOARD [HR-J770KR]



COMPONENT PARTS LOCATION GUIDE <DEMOMULATOR> [VR610/61]

REF.NO.	LOCATION	REF.NO.	LOCATION	REF.NO.	LOCATION	REF.NO.	LOCATION
CAPACITOR							
C1501	B C 2A	C1515	A D 1A	C1530	B C 2B	R1502	B C 2A
C1502	A D 2A	C1516	B C 1A	CONNECTOR			
C1503	B C 2A	C1517	A D 1B	CN1501	A D 3B	R1503	B C 2A
C1504	B C 2A	C1518	A D 1B	IC			
C1505	B C 2A	C1519	A D 1B	IC1501	A D 2A	R1504	B C 2A
C1506	B C 2A	C1520	A D 1B	COIL			
C1507	B C 2A	C1521	B C 1B	L1501	A D 1A	R1505	B C 2A
C1508	A D 1A	C1522	A D 2B	TRANSISTOR			
C1509	B C 2A	C1523	B C 1B	Q1501	A D 2A	R1506	B C 2A
C1510	B C 1A	C1524	A D 2B	Q1502	A D 1B	R1507	B C 2A
C1512	B C 1A	C1525	B C 2B	RESISTOR			
C1513	A D 1A	C1526	B C 2B	R1501	B C 3A	R1508	B C 2A
C1514	A D 1A	C1527	B C 2B	R1502	B C 2A	R1509	B C 1A
		C1528	A D 2B	R1503	B C 2A	R1510	B C 1A
		C1529	B C 2B	R1504	B C 2A	R1511	B C 1B
				R1505	B C 2A	R1512	B C 1B
				R1506	B C 2A	R1513	B C 1B
				R1507	B C 2A	R1514	B C 1B
				R1508	B C 2A	R1515	B C 1B
				R1509	B C 1A	R1516	B C 2B
				R1510	B C 1A		
				R1511	B C 1B	CF1501	A D 2A
				R1512	B C 1B	CF1502	A D 2A
				R1513	B C 1B	CF1503	A D 2B
				R1514	B C 1B	T1501	A D 2A
				R1515	B C 1B	T1502	A D 2B
				R1516	B C 2B		

4.2 DEMODULATOR SCHEMATIC DIAGRAM [HR-J770KR]



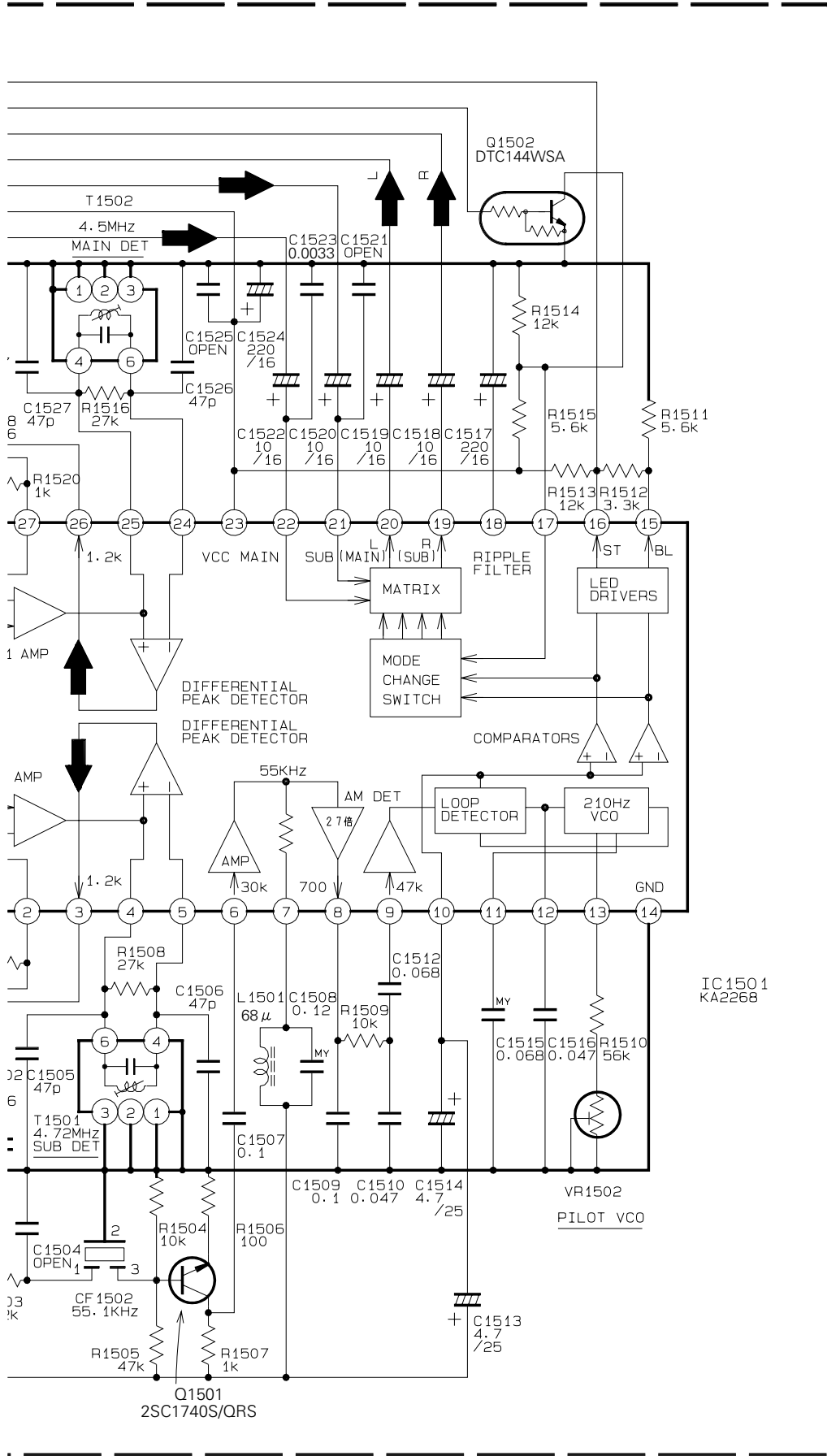
4-2

A

B

C

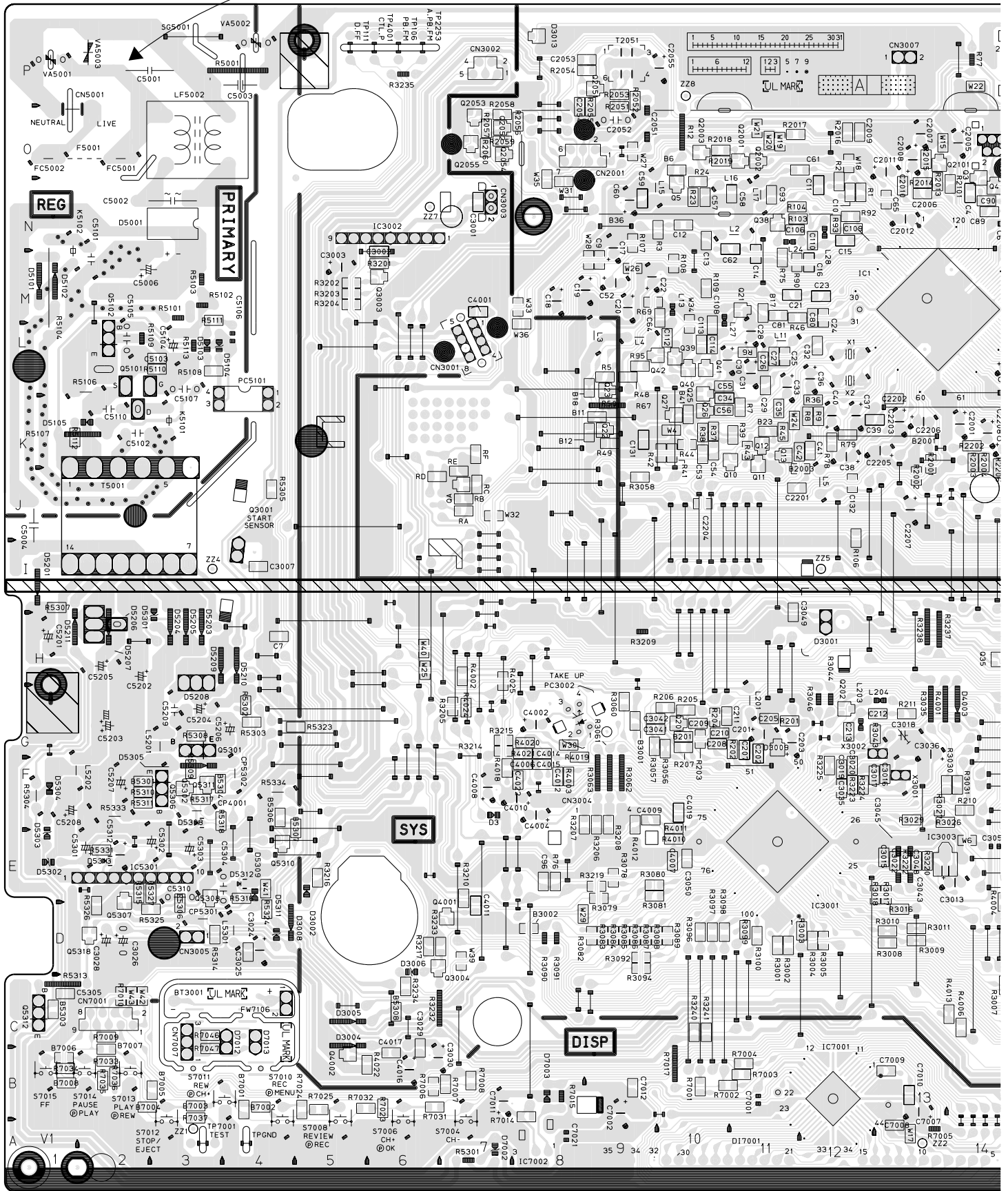
D

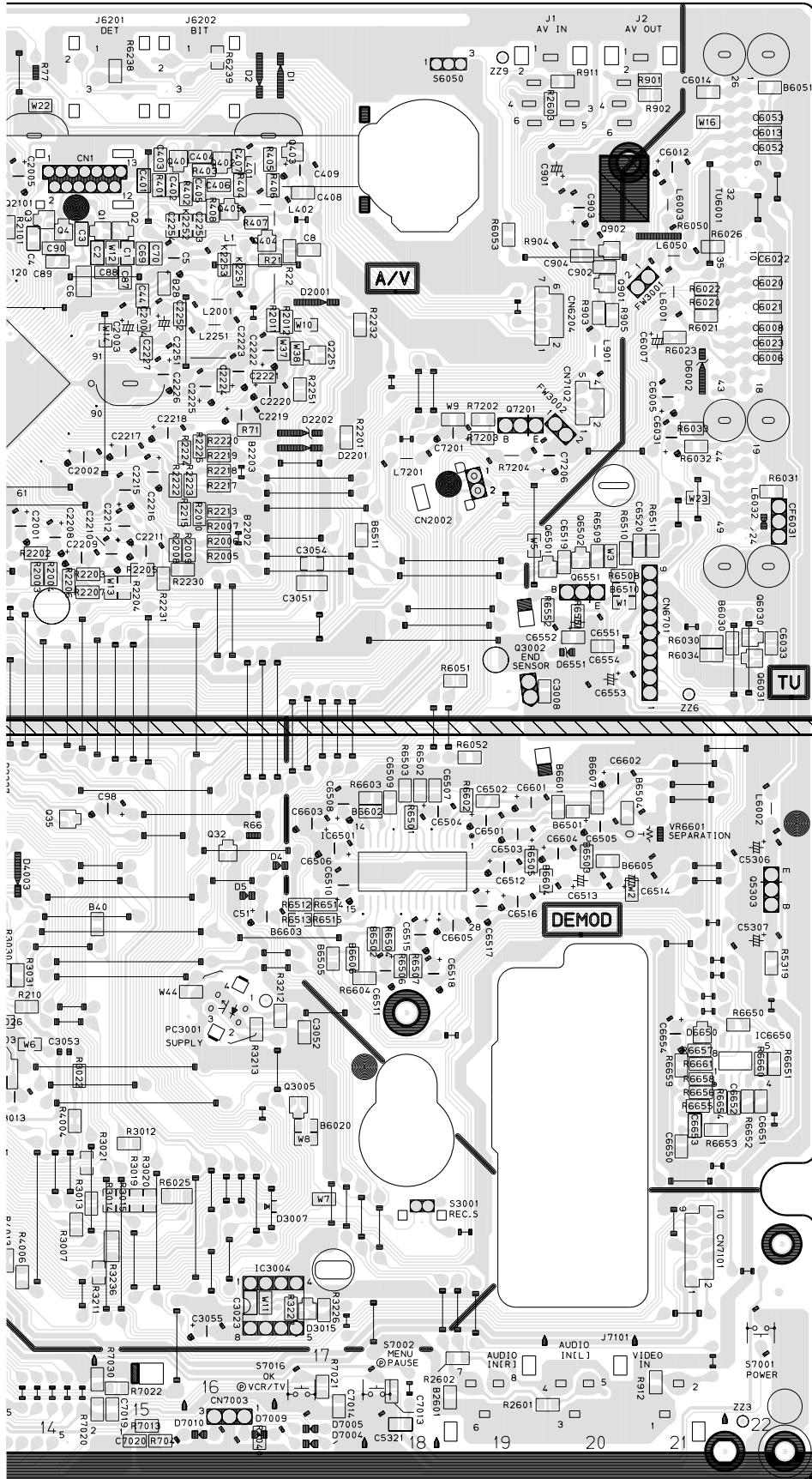


4.3 MAIN, A/C HEAD, MINIFRONT, LOADING MOTOR AND R.PAUSE CIRCUIT BOARDS

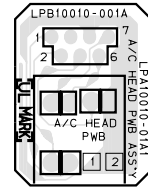
<03>MAIN
LPB10088-001E

DANGEROUS VOLTAGE

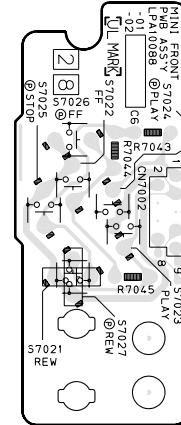




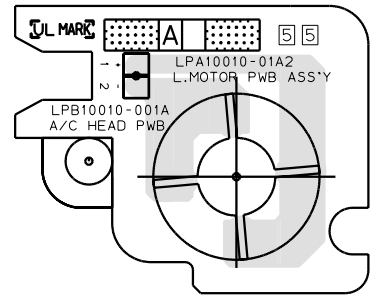
<12>A/C HEAD
LPB10010-001A



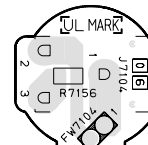
<28>MINI FRONT
LPB10088-001E



<55>LOADING MOTOR
LPB10010-001A



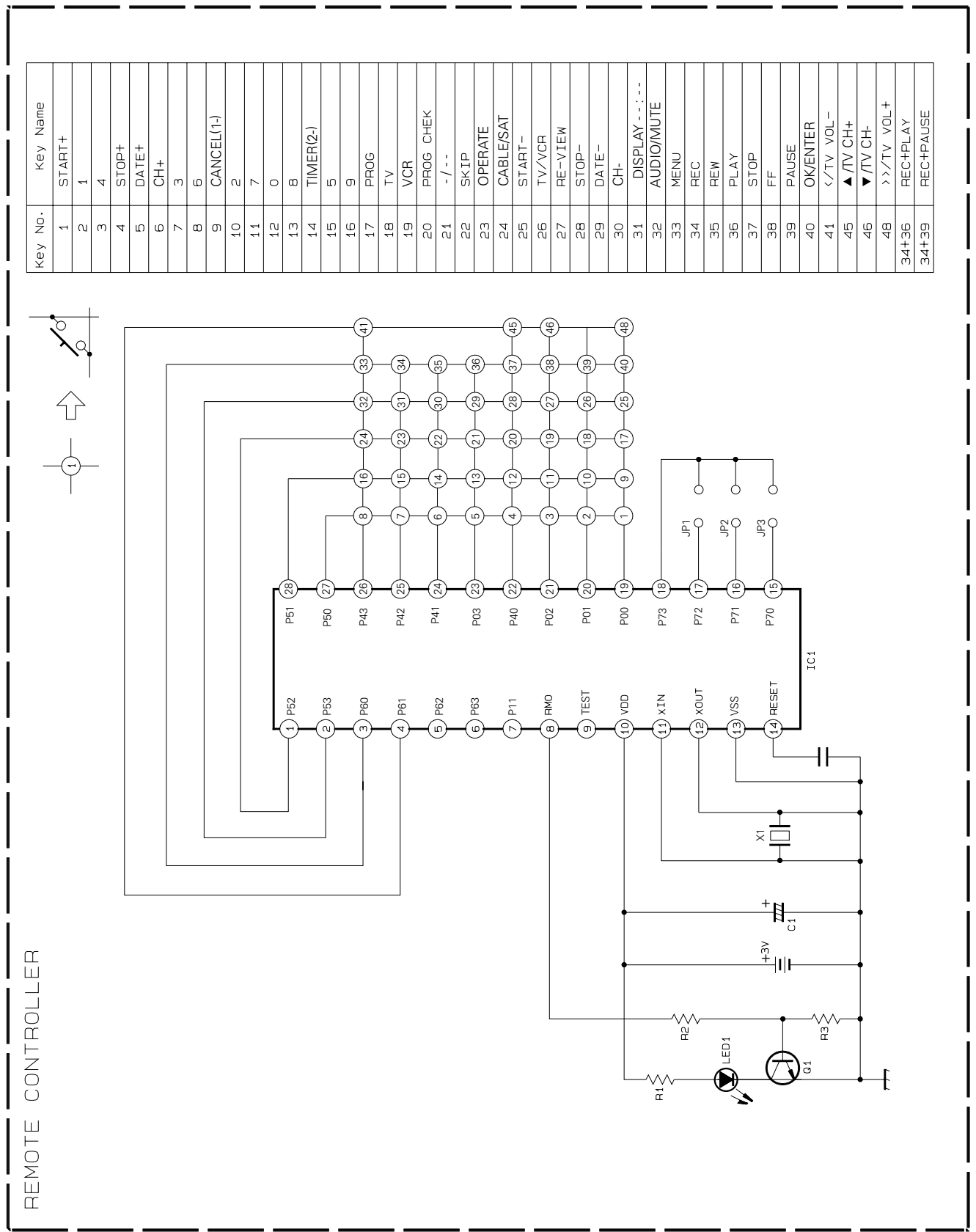
<91>R.PAUSE
LPB10088-001E



4.4 REMOTE CONTROL SCHEMATIC DIAGRAM

NOTES:

- 1. All parts shown in this schematic are critical for safety.
- 2. This schematic is only for reference.
- Avoid replacing individual parts.
- Replace the entire unit only.



5

4

3

2

1

REMOTE CONTROLLER

A

B

C

D

4-7